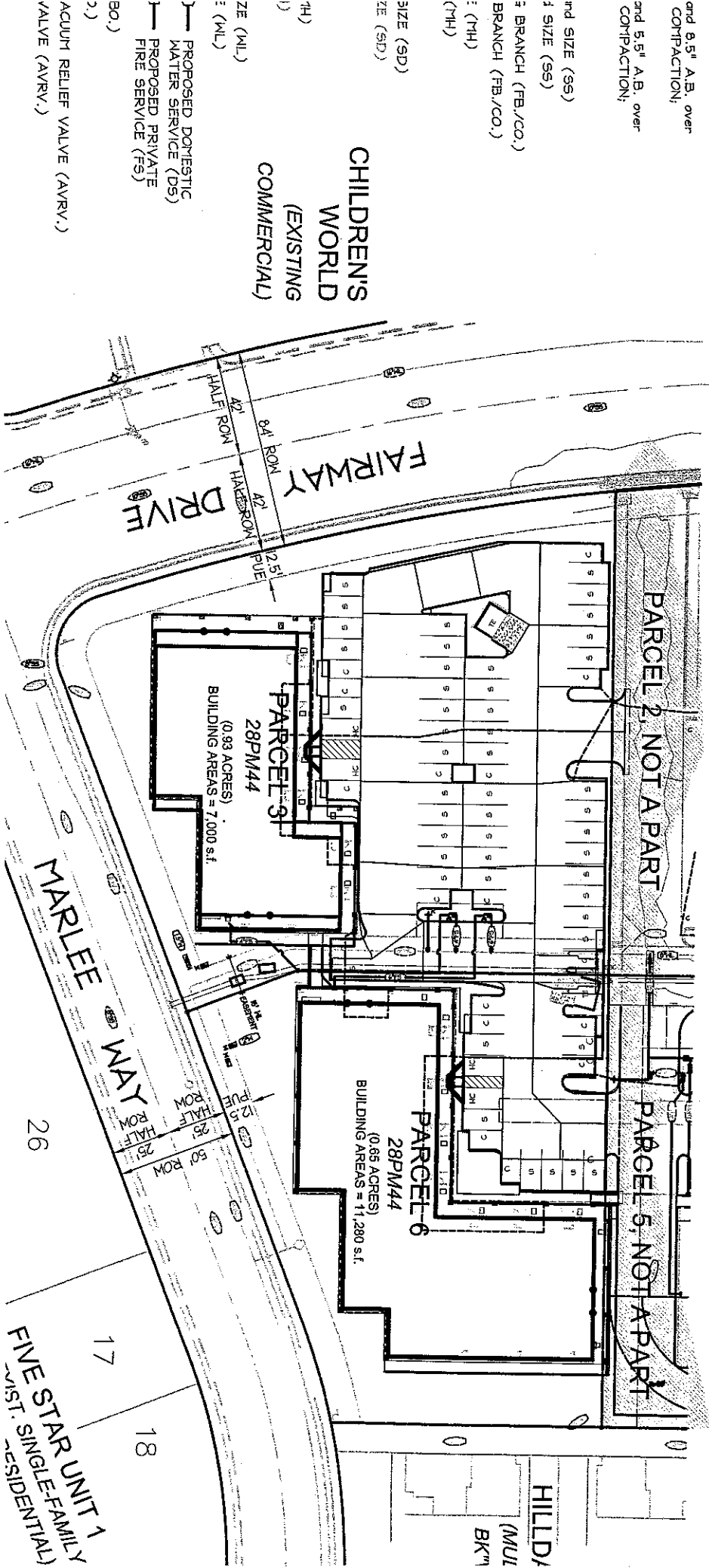


FAIRWAY DOWNS RETAIL CENTER

PARCEL 13' - PARCEL 16'

SPU-94-14

PARCEL 13' AND PARCEL 16' of PARCEL MAP DL-94-05, FILED IN THE OFFICE of PLACER COUNTY, CALIFORNIA, in BOOK 28 OF PARCEL MAPS, at PAGE SUNSET BOULEVARD City of Rocklin, California WDDID # 5531C323506



- 1) SECTION
- and 8.5' A.B. over COMPACTON;
- and 5.5' A.B. over COMPACTON;
- ION:
- nd SIZE (SS)
- 1 SIZE (SS)
- BRANCH (FB./CO.)
- BRANCH (FB./CO.)
- (MH)
- (MH)
- SIZE (SD)
- ZE (SD)
- (MH)
- (MH)
- CHILDREN'S WORLD (EXISTING COMMERCIAL)
- ZE (ML)
- (ML)
- PROPOSED DOMESTIC WATER SERVICE (DW)
- PROPOSED PRIVATE FIRE SERVICE (FS)
- BO.)
- ACUITY RELIEF VALVE (AVRV.)
- VALVE (AVRV.)

26
17
18
HILLSD (MUL BK)
FIVE STAR UNIT 1 (SINGLE-FAMILY RESIDENTIAL)